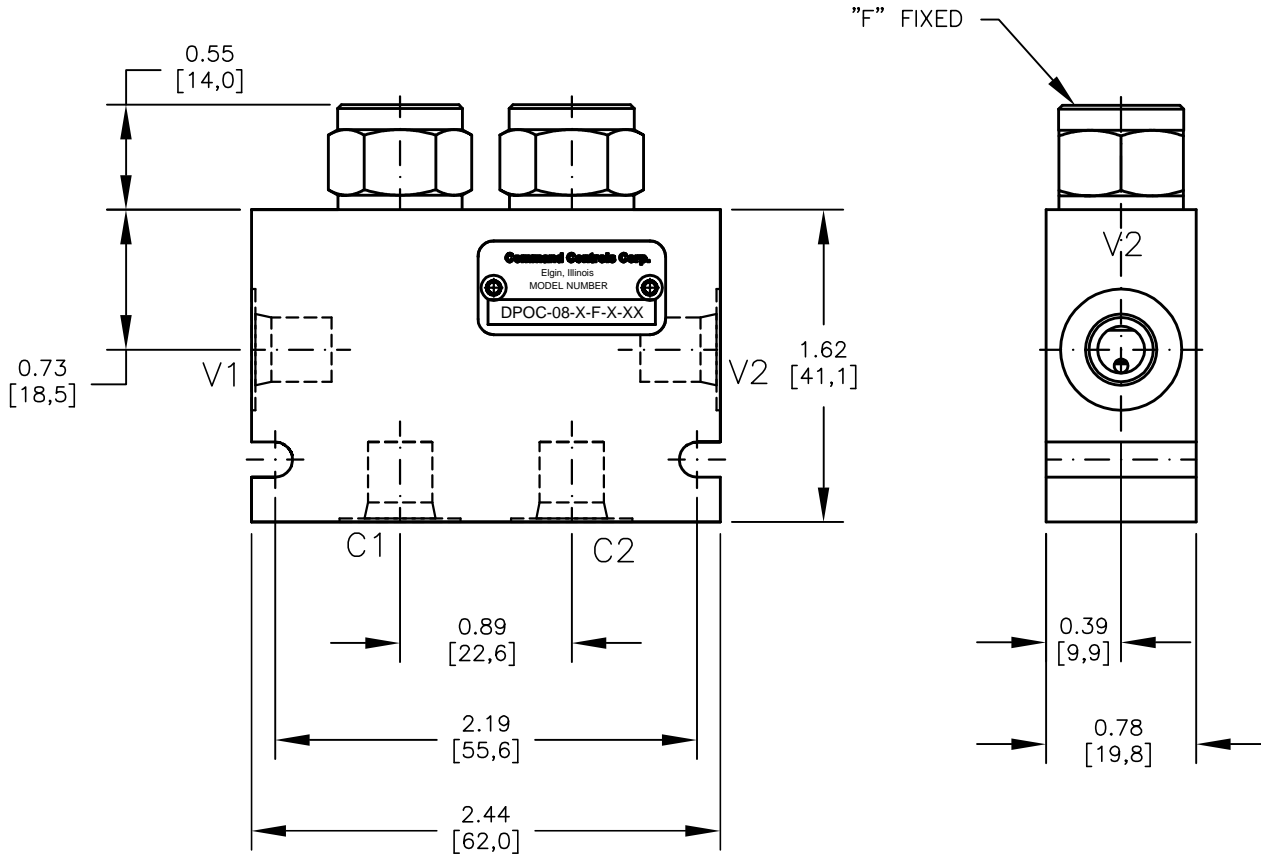
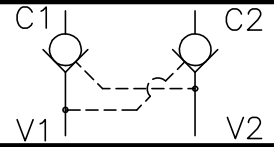




DUAL PILOT OPERATED CHECK VALVE POPPET TYPE, PILOT TO OPEN, 3 TO 1 PILOT RATIO.



FOR ALUMINUM OR STEEL VALVE HOUSING CONFIGURATIONS SEE PAGE 0-026.0

DPOC-08-X-X-X-XXX

BASIC

SIZE

08 = 3/4"-16 UNF

SEALS

N = BUNA "N"
V = VITON

ADJUSTMENT

F = FIXED

CRACK PRESSURE

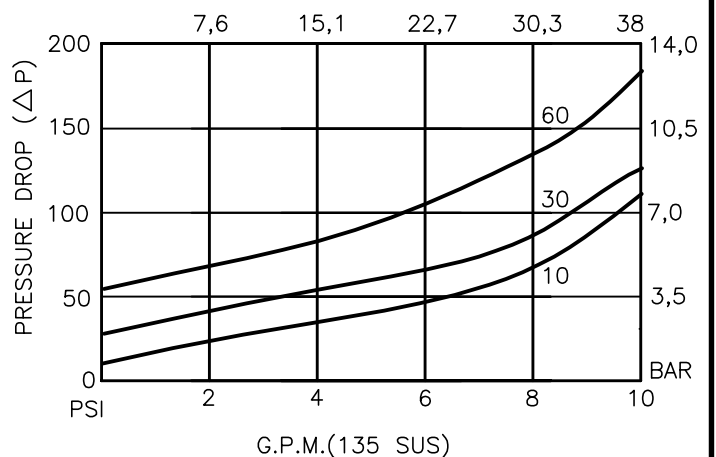
010 = 10 PSI
030 = 30 PSI
060 = 60 PSI

PORTS

03BX = G 3/8" BSPP
04BX = G 1/2" BSPP
08TX = SAE - #8

"A" - ALUM. HOUSING
"S" - STEEL HOUSING

L/M (28,5 cSt)





DUAL PILOT OPERATED CHECK VALVE POPPET TYPE, PILOT TO OPEN, 3 TO 1 PILOT RATIO.

DESCRIPTION

This unit is a cartridge type, guided poppet, with cross line pilot, dual hydraulic pilot operated check valve, for use as a blocking or load holding device for high pressure applications.

OPERATIONS

This valve allows free flow from port V1 to port C1 and V2 to C2 then blocks reverse flow until a pilot pressure is sensed at pilot ports which are connected to ports V1 and V2 therefore opening flow from port C1 or port C2.

This pilot operated check valve has a 3 to 1 pilot ratio, meaning that it takes at least one-third of the load pressure held at port 1 that is required at port 3 to open the valve.

FEATURES AND BENEFITS

A low friction seal on pilot piston is standard.

A separate heavy spring assures fast return of the pilot piston for a very quick, reliable and positive valve re-seat.

All external carbon steel parts are plated for longer life against the elements. All cartridge valves are 100% functionally tested.

Industry common cavity.

SPECIFICATIONS

OPERATING PRESSURE: 5,000 PSI [350 Bar]

PROOF PRESSURE: 10,000 PSI [700 Bar]

FLOW: 10.0 GPM [38 l/m] nominal. See performance chart.

PILOT RATIO: 3 TO 1

INTERNAL LEAKAGE: 5 drops per minute maximum @ 5,000 PSI [350 Bar]

VALVE HOUSINGS: 2500 PSI [175 Bar] = Aluminum - Anodized.

5000 PSI [350 Bar] = Steel - Unplated.

OPERATING TEMPERATURE: -40° to +250° F. [-40° to +120° C.]

OPERATING MEDIA: All general purpose hydraulic fluids such as MIL-H-5606, SAE-#10, SAE-#20, etc.

INSTALLATION: No restrictions.

SEAL KIT: SKN-0828 Buna "N"

SKV-0828 Viton

WEIGHT: 1.70 lb [.77 kg].

VALVE CAVITIES: #C0825, See Page 0-021.0.